

Instructions

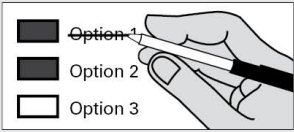
How to vote



Use a dark blue or black ink pen to completely fill in the box to the left of your choice.

Vote for one in each race. If you vote for more than one, no votes will be counted for that race.

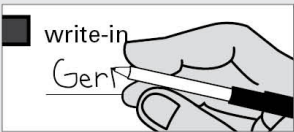
If you make a mistake



Draw a line through the entire measure response or candidate's name.

Then you may make another choice.

Optional write-in



To vote for a candidate not listed for that race, fill in the box to the left of "write-in" and print the name on the line.

Who donates to campaigns?
View contributors for candidates and measures

Public Disclosure Commission
www.pdc.wa.gov
Toll Free (877) 601-2828

READ: Each candidate for partisan office may state a political party that he or she prefers. A candidate's preference does not imply that the candidate is nominated or endorsed by the party, or that the party approves of or associates with that candidate.

Federal Partisan Office

United States - U.S. Senator

6-year term
Vote for one

- Henry Clay Dennison
(Prefers Socialist Workers Party)
- Mohammad Hassan Said
(Prefers Democratic Party)
- John Guenther
(Prefers Republican Party)
- Tiffany Smiley
(Prefers Republican Party)
- Dan Phan Doan
(States No Party Preference)
- Dr Pano Churchill
(Prefers Democratic Party)
- Dave Saulibio
(Prefers JFK Republican Party)
- Sam Cusmir
(Prefers Democratic Party)
- Bill Hirt
(Prefers Republican Party)
- Jon Butler
(Prefers Independent Party)
- Bryan Solstin
(Prefers Democratic Party)
- Martin D. Hash
(States No Party Preference)
- Patty Murray
(Prefers Democratic Party)
- Thor Amundson
(Prefers Independent Party)
- Charlie (Chuck) Jackson
(Prefers Independent Party)
- Naz Paul
(Prefers Independent Party)
- Ravin Pierre
(Prefers Democratic Party)
- Leon Lawson
(Prefers Trump Republican Party)
-

Congressional District No. 5
Partisan Office

U.S. Representative

2-year term
Vote for one

- Cathy McMorris Rodgers
(Prefers Republican Party)
- Natasha Hill
(Prefers Democratic Party)
- Sean Clynych
(Prefers Republican Party)
- Ann Marie Danimus
(Prefers Democratic Party)
-

State Partisan Office

Secretary of State

2-year unexpired term
Vote for one

- Bob Hagglund
(Prefers Republican Party)
- Kurtis Engle
(Prefers Union Party)
- Marquez Tiggs
(Prefers Democratic Party)
- Tamborine Borrelli
(Prefers America First (R) Party)
- Steve Hobbs
(Prefers Democratic Party)
- Keith L. Wagoner
(Prefers Republican Party)
- Mark Miloscia
(Prefers Republican Party)
- Julie Anderson
(Prefers Nonpartisan Party)
-

Continue voting
next side



**Legislative District No. 9
Partisan Offices**

State Representative Pos. 1
2-year term
Vote for one
 Mary Dye
(Prefers Republican Party)

State Representative Pos. 2
2-year term
Vote for one
 Joe Schmick
(Prefers GOP Party)

County Partisan Offices

County Assessor
4-year term
Vote for one
 Jenny L. Rynearson
(Prefers Republican Party)

County Auditor
4-year term
Vote for one
 Darla McKay
(States No Party Preference)

County Clerk
4-year term
Vote for one
 McKenzie A. Campbell
(States No Party Preference)

**County Commissioner
District No. 3**
4-year term
Vote for one
 Chuck Whitman
(Prefers Republican Party)

County Prosecutor
4-year term
Vote for one
 Benjamin C. Nichols
(States No Party Preference)

County Sheriff
4-year term
Vote for one
 John Hilderbrand
(States No Party Preference)

County Partisan Office

County Treasurer
4-year term
Vote for one
 Holly Steiner
(States No Party Preference)

91474