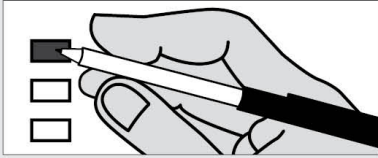


Instructions

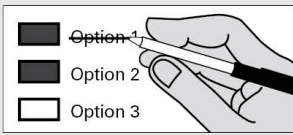
How to vote



Use a dark blue or black ink pen to completely fill in the box to the left of your choice.

Vote for one in each race. If you vote for more than one, no votes will be counted for that race.

If you make a mistake



Draw a line through the entire measure response or candidate's name.

Then you may make another choice.

Optional write-in



To vote for a candidate not listed for that race, fill in the box to the left of "write-in" and print the name on the line.

Who donates to campaigns?  
View contributors for candidates and measures

Public Disclosure Commission  
www.pdc.wa.gov  
Toll Free (877) 601-2828

"If a primary election was held for an office, the two candidates who received the most votes in the Primary advanced to the General Election.

Each candidate for partisan office may state a political party that he or she prefers. A candidate's preference does not imply that the candidate is nominated or endorsed by the party, or that the party approves of or associates with that candidate."

State Measures

Advisory Vote No. 39

Engrossed Substitute  
Senate Bill 5974

The legislature increased, without a vote of the people, the tax on aircraft fuel from 11 cents to 18 cents per gallon, costing \$14 million in its first ten years, for government spending.

This tax increase should be:

- Repealed
- Maintained

Advisory Vote No. 40

Engrossed Substitute  
House Bill 2076

The legislature imposed, without a vote of the people, premiums on "transportation network companies" to provide workers compensation to their drivers, costing an indeterminate amount in its first ten years, for government spending.

This tax increase should be:

- Repealed
- Maintained

READ: Each candidate for partisan office may state a political party that he or she prefers. A candidate's preference does not imply that the candidate is nominated or endorsed by the party, or that the party approves of or associates with that candidate.

Federal Partisan Office

United States - U.S. Senator

6-year term  
Vote for one

Patty Murray  
(Prefers Democratic Party)

Tiffany Smiley  
(Prefers Republican Party)

Congressional District No. 5  
Partisan Office

U.S. Representative

2-year term  
Vote for one

Cathy McMorris Rodgers  
(Prefers Republican Party)

Natasha Hill  
(Prefers Democratic Party)

State Partisan Office

Secretary of State

2-year unexpired term  
Vote for one

Steve Hobbs  
(Prefers Democratic Party)

Julie Anderson  
(Prefers Nonpartisan Party)

Continue voting  
next side



Sample Ballot

2022 General Election  
November 8, 2022  
Asotin County

Precinct 301.01-CLARKSTON

Page 2 of 2

16004  
3221

**Legislative District No. 9  
Partisan Offices**

**State Representative Pos. 1**

2-year term  
Vote for one

Mary Dye  
(Prefers Republican Party)

**State Representative Pos. 2**

2-year term  
Vote for one

Joe Schmick  
(Prefers GOP Party)

**County Partisan Offices**

**County Assessor**

4-year term  
Vote for one

Jenny L. Rynearson  
(Prefers Republican Party)

**County Auditor**

4-year term  
Vote for one

Darla McKay  
(States No Party Preference)

**County Clerk**

4-year term  
Vote for one

McKenzie A. Campbell  
(States No Party Preference)

**County Commissioner  
District No. 3**

4-year term  
Vote for one

Chuck Whitman  
(Prefers Republican Party)

**County Partisan Offices**

**County Prosecutor**

4-year term  
Vote for one

Benjamin C. Nichols  
(States No Party Preference)

**County Sheriff**

4-year term  
Vote for one

John Hilderbrand  
(States No Party Preference)

**County Treasurer**

4-year term  
Vote for one

Holly Steiner  
(States No Party Preference)

**Judicial Nonpartisan Offices**

**Supreme Court  
Justice Position 1**

6-year term  
Vote for one

Mary I. Yu

**Supreme Court  
Justice Position 5**

6-year term  
Vote for one

Barbara Madsen

**Supreme Court  
Justice Position 6**

6-year term  
Vote for one

G. Helen Whitener

**Judicial Nonpartisan Offices**

**Court of Appeals  
Division 3, District 2  
Judge Position 1**

6-year term  
Vote for one

George Fearing

**District Court Judge**

4-year term  
Vote for one

Tina L. Kernan

**PUD Nonpartisan Office**

**Public Utility District  
Commissioner No. 3**

6-year term  
Vote for one

Greg McCall

Read Both Sides of the Ballot